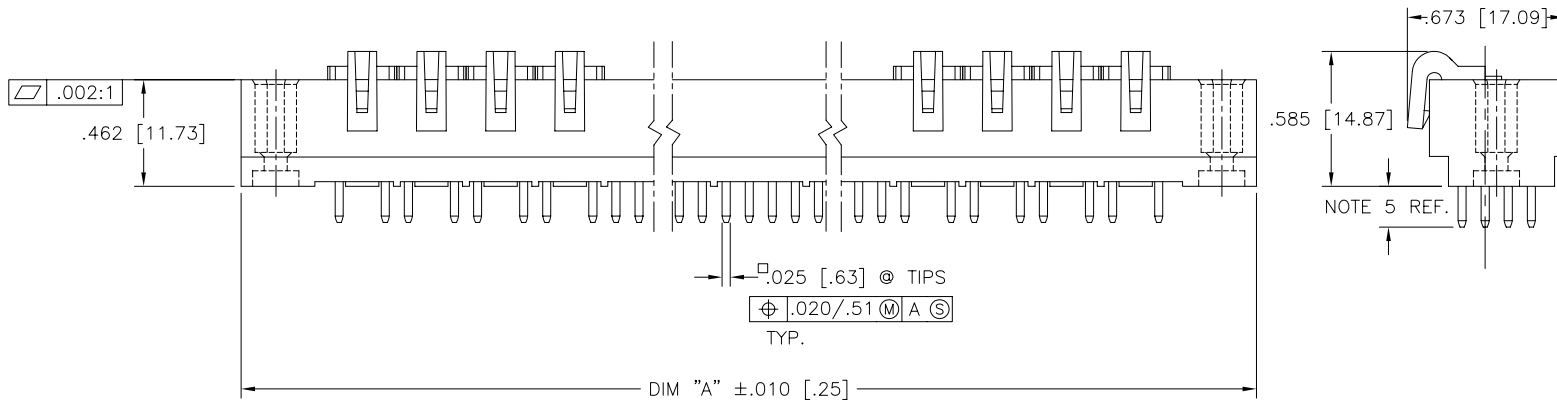
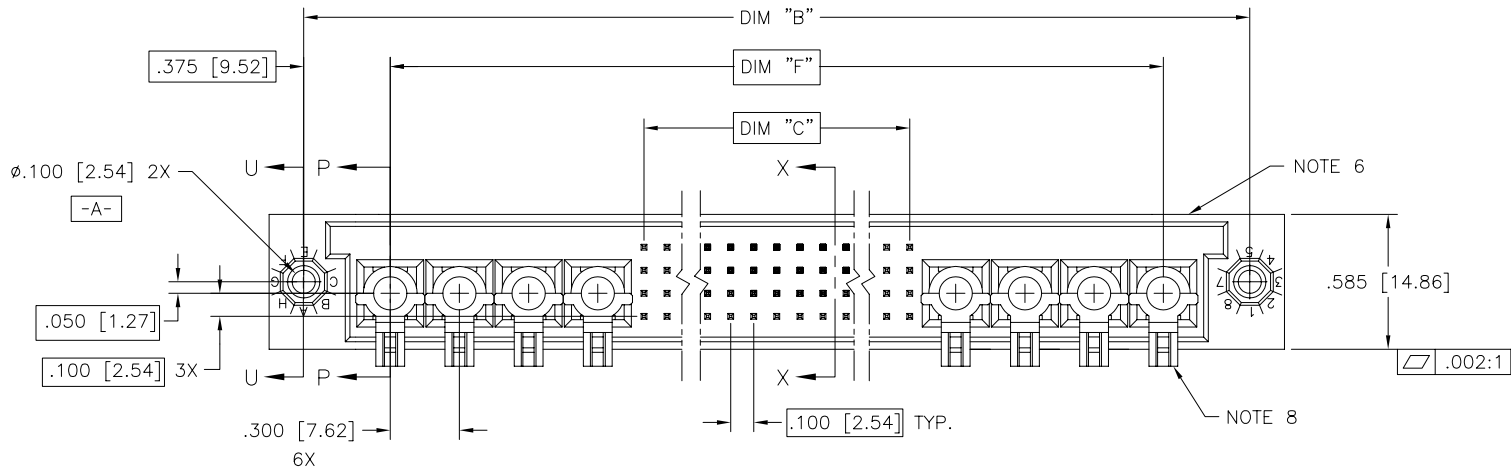


PRODUCT NUMBER
SEE NOTE 1

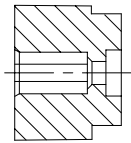


mat'l. code NOTE 3		surface ISO 1302 ✓		tolerance ISO 406 ISO 1101		projection INCH/MM		product family HPC	
tolerances unless otherwise specified		angles		linear		scale 1:1		title 4 ROW VERTICAL HEADER SOLDER TAIL, 0 G.P., 8 P.P.	
A	V22185	RDS	5/11/92		.xx±.01/.3			dwg no 50539	
B	V40262	PDP	1/14/94		.xxx±.005/.13			sheet 1 of 2 size A3	
C	V41237	GAH	8/17/94	0'±2'	.xxx±.0020/.051			type Product Customer Drawing	
D	V91069	HTB	5/17/99	dr	D.SHEAFFER	5/4/92			
E	V00274	JWS	2/2/00	engr	S.CLARK	5/11/92			
F	M06-0260	MHT	7/07/06	chr	S.CLARK	5/11/92			
				appd	S.CLARK	5/11/92			
sheet index	revision	F	F						
	sheet	1	2						

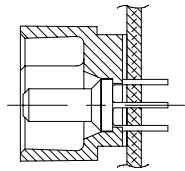


Copyright FCI

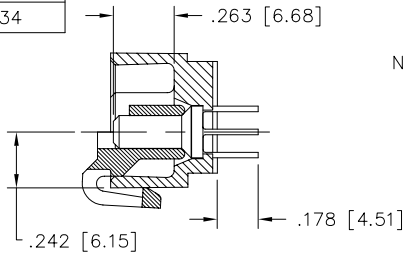
PRODUCT NUMBER	DIM.	LENGTH FORMULAS
SEE NOTE 1	DIM "A"	.100/2.54 x NO. OF COLUMNS +3.15/80.0
	DIM "B"	.100/2.54 x NO. OF COLUMNS +2.850/72.39
	DIM "C"	.100/2.54 x NO. OF COLUMNS -.100/2.54
	DIM "F"	.100/2.54 x NO. OF COLUMNS +2.100/53.34



SECTION U-U



DETAIL P
(INSTALLED IN
PCB, NOTE 8)



SECTION P-P
(W/LOCATOR,
SEE DETAIL P)

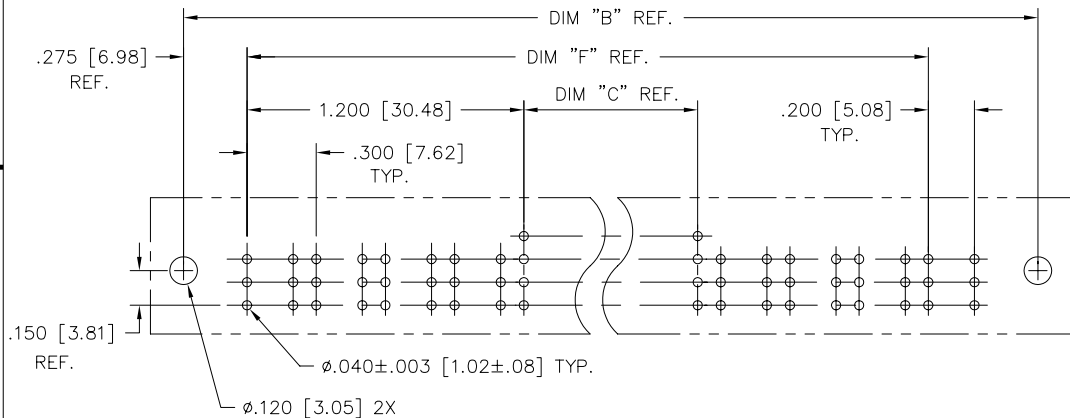
NOTES:

① PRODUCT NUMBERING CODE:
50539 - X YYY Z
TAIL LENGTH (NOTE 5)
NO. OF POSITIONS (NOTE 2)
PLATING (NOTE 4)
BASE NUMBER

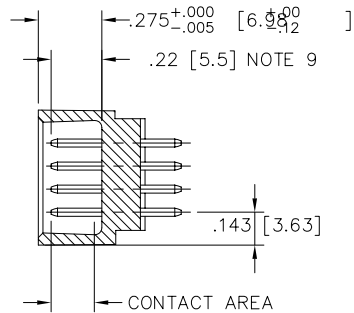
PRODUCT NUMBERING CODE FOR
SELECT LOAD PART NUMBERS:

50539 - XXYYY
SEQUENCE NUMBER
ALWAYS 'XX'
BASE NUMBER

- ② THIS PRODUCT IS CONFIGURED IN SIZES OF 6 THRU 80 COLUMNS IN INCREMENTS OF ONE.
i.e.: 6,7,8,9,.....78,79,80.
- ③ HOUSING MATERIAL: GLASS AND MINERAL FILLED HIGH TEMP. THERMOPLASTIC. FLAME RETARDANT PER UL94V-0. COLOR: BLACK.
PIN MATERIAL: PHOS BRONZE
- ④ PLATING CONTACT AREA OPTIONS:
A = 50u" Ni UNDER ALL WITH 30u" Au ON CONTACT AREA, SnPb ON PCB INTERFACE AND Au FLASH ON ALL OTHER AREAS.
- ⑤ TAIL LENGTH OPTIONS: (±.015/.38)
A = .177/4.5
J = .120/3.05
- ⑥ MANUFACTURE'S NAME, PART NUMBER AND LOT CODE TO APPEAR ON THIS SURFACE PER BUS-12-108.
- 7. FOR DOCUMENTATION MENU, SEE BUS-01-057.
- ⑧ POWER PIN LOCATOR (REF. 50234) TO BE REMOVED AFTER SOLDERING.
- ⑨ REFERENCE 50801 FOR F.M.L.B. OPTIONS AND WORKSHEET.



RECOMMENDED PCB LAYOUT
(ALL HOLES LOCATED ON .100/2.54 GRID
UNLESS OTHERWISE SPECIFIED)



SECTION X-X

mat'l. code		surface ISO 1302 ✓		tolerance ISO 406 ISO 1101		projection ⊕		product family HPC	
ltr		ecn no dr		date		tolerances unless otherwise specified		title	
F						.XX±.01/.3 linear .XXX±.005/.13 0'±2' .XXX±.0020/.05		INCH/MM scale 1:1	
		dr		D.SHEAFFER 5/4/92		dwg no		sheet 2 of 2 size	
		enr		S.CLARK 5/11/92		50539		A3	
		chr		S.CLARK 5/11/92		type		Product Customer Drawing	
		appd		S.CLARK 5/11/92					
sheet index		revision sheet							